

EXHIBIT "A"

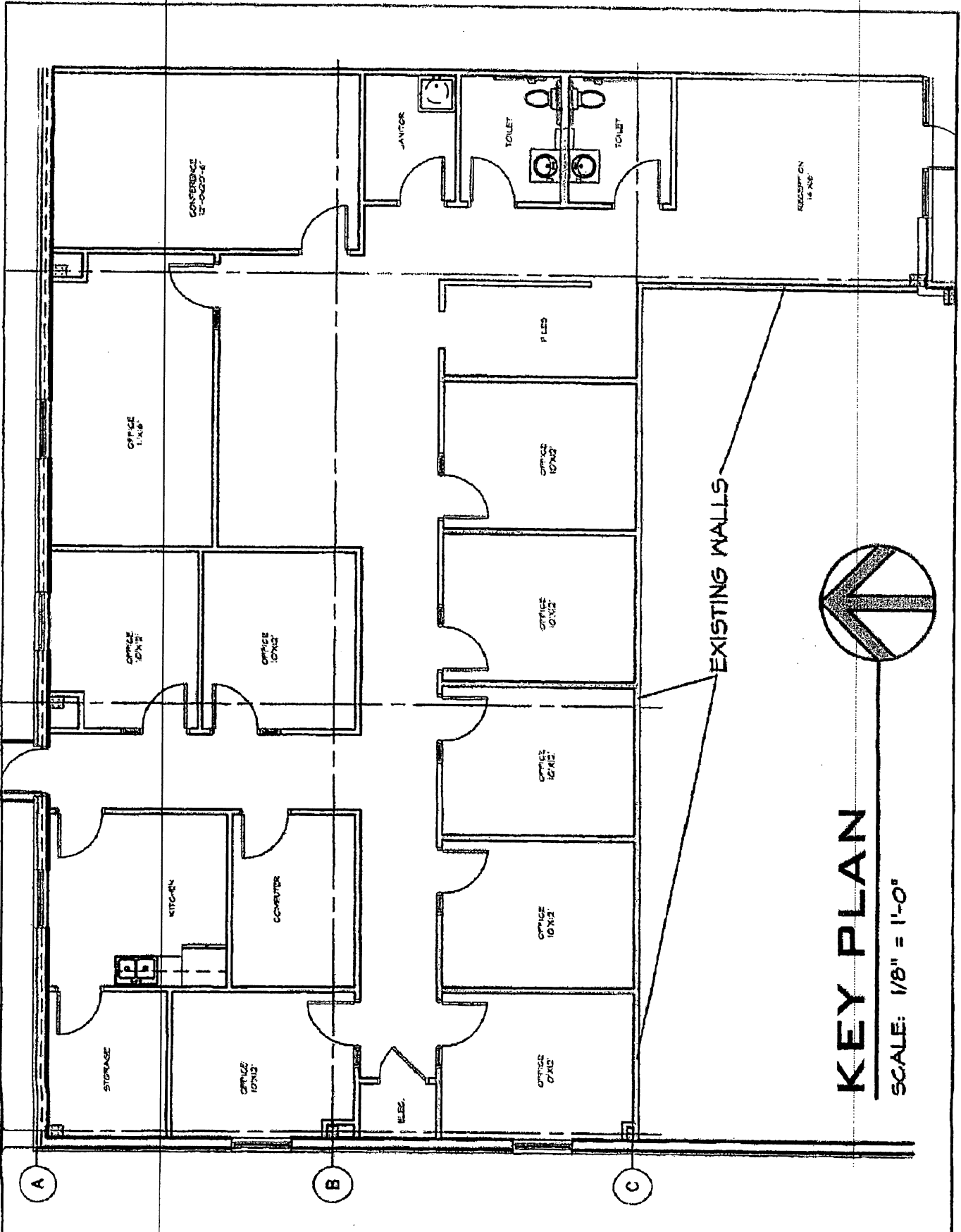
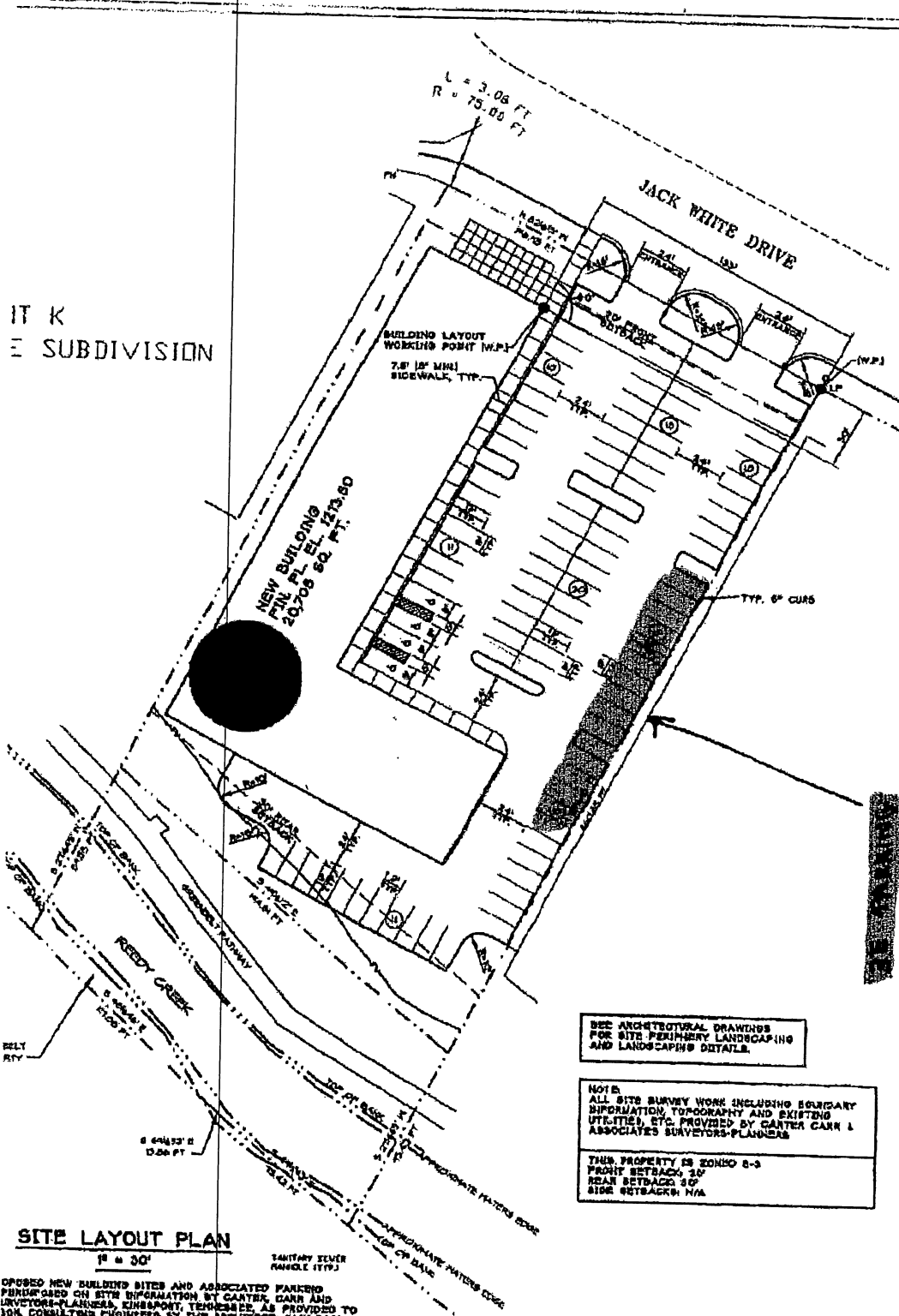


EXHIBIT "B"

IT K
E SUBDIVISION



SITE LAYOUT PLAN

1" = 30'

SANITARY SEWER
MANHOLE (1773)

PROPOSED NEW BUILDING SITES AND ASSOCIATED PARKING PERMITTED ON SITE INFORMATION BY CARTER, CARR AND SURVEYORS-PLANNERS, ENGINEERS, ARCHITECTS, AS PROVIDED TO SON, CONSULTING ENGINEERS BY THE ARCHITECT, GAIN RASH WEST, TENNESSEE.

3 SPACES 100 SQUARE FEET REGULAR SPACES, 4 HANDICAP SPACES 1 SPACE PER 200 SQUARE FEET OF BUILDING SPACE.

WOODRUFF & WILSON
CONSULTING ENGINEERS
PHONE (423) 266-1418 317 COMMERCE STREET
FAX (423) 266-1442 MEMPHIS, TENNESSEE 38103

NO.	DATE	REVISION	BY
1		FORWARD INCLUDED SETBACKS AND BLDG. SQUARE FOOTAGE	

JACK WHITE STRIP CENTER

Architectural
Services

**Gain
Rash
West**
Architects

130 Regional Park Dr.
Kingsport, TN 37660
Ph: (423) 348-7700
Fax: (423) 348-7413
www.grain.com



Issued 08-16-08
Checked SDN
Approved SDN
Drawn DPM
Project no. 6056
Drawing name
SITE LAYOUT PLAN

SP-1